

# SafeNet NEWS

SafeNet Center Counseling, Education, Legal Advocacy & Hospitality House Emergency Shelter

## Making *Safe Havens* For Children

**W**hen children fear for their own safety or the safety of somebody they love — as in a domestic violence situation — they can have a hard time learning and making friends.

As time goes on even greater problems can happen including disruptive behavior, disregard for authority, and extreme aggression as they become teenagers and adults.

### Reaching Out With Training

SafeNet was selected as the provider of the SafeHavens program in Northwest Pennsylvania. The program provides training for professionals and support staff to help children heal from witnessing violence.

The program was developed by Family Communications, the producers of *Mister Rogers' Neighborhood*. It was based on the work of the *Child Witness to Violence Project* at the Boston Medical Center.

### Mister Rogers Says

"When you are helping children feel safe, you are helping them use their energies for moving forward toward a more hopeful future for themselves and for our society," the late Fred Rogers once said.

### Call For Information

Since providing SafeHavens/SafeStart training, we have trained mental health and law enforcement professionals as well as teachers, child-care workers, and even parents. Most recently, the training was made part of the United Way's *Success By 6* program.



*To arrange a Safe Havens workshop for your staff, please call SafeNet at 455-1774 or e-mail Lisa at [lbaumgardner@safeneterie.org](mailto:lbaumgardner@safeneterie.org).*

**\$2 Million SafeNet  
Campaign Will  
Launch at GE  
Learning Center**  
(see details page 2)



# Capital Campaign Begins

## SafeNet Board of Directors

Shirley Williams

*President*

Jeanne Peck

*Vice President*

Edward Whitbred

*Treasurer*

Kathleen Pae

*Secretary*

Joseph Conti, Esq.

Renee Filson

James Herr

Lynn McBrier, Esq.

Nancy Sennett

Kathleen Whipple

Linda King

*Executive Director*

SafeNet will launch the public phase of its \$2 million capital campaign this spring at SGE's Learning Center in Erie. The event will bring together campaign organizers and supporters from the regional community. SafeNet has already raised over \$500,000 toward its goal from grants and gifts pledged in advance of the campaign's public start.

The money raised from the fund drive will go toward renovating and expanding SafeNet's Hospitality House emergency shelter for victims of domestic violence. Phase I of the project, which has already begun, will focus on erecting a two-story shelter annex adjacent to SafeNet's current shelter. The much needed additional space will alleviate overcrowding and give women and their children more privacy and quiet healing time throughout their stay. (Since 2004, we have been filled to capacity for a greater number of days each year.)

When the new construction is complete, Phase II of the project will begin. The focus of Phase II will be the renovation of the existing shelter. This interior redesign will include expanding the kitchen, updating the appliances, plus remodeling the bathrooms, replacing windows and freshening up the paint and furnishings throughout the house. A comprehensive security system also will be installed.

*For more information contact Rick Liebel at SafeNet Center in Erie at 814-455-1774.*



Campaign Committee from left: Community Chairpersons Walter and Joan Harf, Board President Shirley Williams, Peggy Richardson, Treasurer Ed Whitbred, Ruth Burton, Jim Herr, Executive Director Linda King and Campaign Committee Chairperson Joe Conti.



The issue of personal safety defines the difference between a domestic violence shelter and a homeless shelter. A domestic violence shelter is a place where victims — whose lives may truly be at stake — come for sanctuary.

Forty percent of the victims who come to SafeNet's Hospitality House are brought by the police because their abusers are dangerous threats and still out there. Another ten percent arrive from hospital emergency rooms because their abusers injured them badly enough as to require medical attention.

At Hospitality House, victims are provided with food and temporary housing. They also are helped with services specific to their needs such as personal counseling; developing a personal safety plan; and legal options counseling. Counseling and safety planning for children who have witnessed violence or been abused themselves are also available. SafeNet's Hospitality House has a confidential address, an extensive security system and a specially trained staff as well.

As their safety needs are met, victims and their children may later participate in peer group counseling, education and outreach programs to establish a life free from abuse and fear.

*Homeless shelters are mainly about housing. Domestic violence shelters are about safety, empowerment and hope.*



# Help End Shelter **OVERCROWDING**

Some days 30 children and their mothers stay in our emergency shelter. (Our shelter is a house originally built for a family of five.)

We hope we never have to turn away a battered woman and her children.

**Please help us expand and renovate our Hospitality House emergency shelter.**

**Send Your Gift Today.**

*Thank You*  
Use the envelope enclosed to send your gift today.



**Janet McCormick Janeck** has joined SafeNet as its new Legal Director. She earned her master's degree in Administration

of Justice from Mercyhurst College and B.S. in Criminal Justice Administration from Missouri Southern State College in Joplin, MO. Previously, she was the assistant director of Gateway Rehabilitation Center, a 68 bed drug and alcohol treatment facility in the Erie area. Before moving to Erie, she worked at St. Louis City Family Court as a deputy juvenile officer in charge of the Abuse and Neglect Unit. At SafeNet, Janet directs and serves as chief administrator of our legal program, managing all aspects of the operation.

**Linda Martz** is the in-house paralegal for our Civil Legal Representation Program. As a paralegal, she assists our in-



house and contract attorneys with their cases for victims of abuse. At SafeNet you can find her preparing legal documents and letters, doing legal research and recording and reporting CLR statistics. She is a graduate of Erie Business Center and complete an internship at Vendetti and Vendetti Law Firm.

## Meet the *New* Members of Our *Legal Team*

**Eric Carr, Esq.** is the in-house attorney for our Civil Legal Representation Project.

Eric handles cases concerning custody, support, landlord/tenant agreements, divorce, unemployment compensation, social security and public welfare in addition to cases seeking protection from abuse.



Eric is a member of both the Pennsylvania and Erie County Bar Associations. He graduated magna cum laude from Gannon University with an undergraduate degree in political science and prelaw. He received his Juris Doctor from Case Western Reserve University School of Law

*Our Civil Legal Representation Project is funded by the Pennsylvania Coalition Against Domestic Violence. It focuses on finding legal remedies that help restore a quality of life that victims of violence might have had if their relationship had not been abusive.*

## In This Edition

- Making Safe Havens** 1
- Campaign Launch** 2
- New Legal Team** 3
- Project Connect** 4

### PROJECT CONNECT Furniture And More Wanted To Help New Starts

Women leaving an abusive relationship may have nothing. SafeNet will pickup your donations of furniture and other household items to help these families as they begin a new life free from abuse.

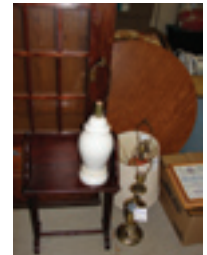
Project Connect trucks are scheduled to pickup good condition furniture from our generous donors. Our families can use all kinds of furniture, house wares and accessories. They may have left during a crisis with nothing but the clothing on their backs.

Sheets, towels, bookcases and framed art also help make a new place seem like home. (Our families are moving to small apartments so some large pieces of furniture may not be appropriate.)

Project Connect clients especially need — chests of drawers, single beds, tables and



Project Connect's Jerry Brace will pick up your donated furniture to give to people in need throughout Erie County.



chairs, dressers, dishes, good pots and pans, coffee and end tables, small bookcases.

To schedule a donation, please call SafeNet at (814) 455-1774 and ask for Project Connect. Or e-mail [khubbard@safeneterie.org](mailto:khubbard@safeneterie.org). Project Connect trucks can pickup items only in Erie and Erie County, PA. Pickup is available only for donations which contain furniture. Other household donations may be dropped off at

SafeNet Center, 1702 French Street. Project Connect is a collaborative project sponsored by US Department of Housing and Urban Development, SafeNet, Family Services, MCW, Erie Dawn, Safe Horizons, The Refuge, and Hope House.

### Community Groups Boost Spirits

Fleeing abuse, living in a shelter, and taking steps to a better but different life than you've known are difficult things to do. But several local organizations—like good friends—reached out to cheer, empower and give hope to victims of domestic violence over the holiday season. Our warm, heartfelt thanks go out to the Junior League of Erie, Knox McLaughlin Gornall and Sennett Attorneys, Bethany Lutheran Church and the Erie County Bar Association for their kindness and generosity.— SafeNet Staff

