

NEWS

SafeNet

SafeNet Center Counseling, Education, Legal Advocacy & Hospitality House Emergency Shelter

In This Edition

- \$2 Million Campaign 1
- Join 5K Race 2
- Nat'l. Award Winner 3
- New PR Director 3

Dr. Marjorie Krebs' Gift Helps Build Endowment

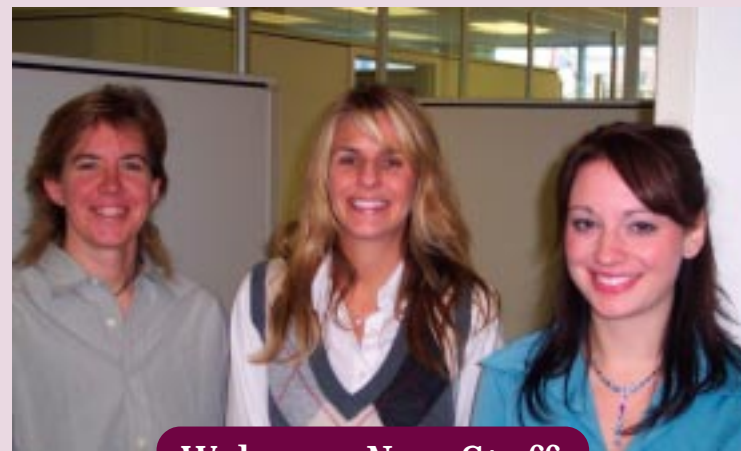
With deep appreciation and gratitude, SafeNet received a bequest for \$40,000 from the estate of Dr. Marjorie J. Krebs, Professor Emeritus at Gannon University, who died in 2004. Dr. Krebs taught psychology at the university for over 20 years, receiving the school's Distinguished Faculty Award during her tenure.



Her generosity will always be remembered and her gift to SafeNet's Endowment Fund will greatly help the battered women and children who come to us for safety, shelter and counsel.

SafeNet's Endowment Fund was established in 2001 and is managed by the Erie Community Foundation. Bequests and gifts to SafeNet are deposited in this fund. For more information contact Linda King at 814-455-1774, Ext. 242.

Photo



Welcome New Staff

SafeNet welcomes its newest staff members (from left) **Jillian Ferri**, **Angela Meyer**, and **Suzanne Sebastian**. Jillian is a recent graduate of Edinboro University with a B.A. in Criminal Justice and will be working as a counselor advocacy trainee at SafeNet. Angela Meyer is a 2001 graduate of Gannon University with a B.A. in Social Work. Angela will be a Case Manager in our TLC program. Suzanne is a new Counselor/Advocate at SafeNet. Most recently, she worked in Phoenix as a mental health case manager for Value Options of Arizona. She has a B.A. in Elementary Education from Gannon University.

◀ **Welcome** also to **Amy Edwards**, a new part-time employee in our children's program. Amy is a junior at Edinboro University with a dual major in Elementary Education and Special Education.

And **Erin Daquelente** is also a new part-time employee in our children's area. Erin is a junior at Penn State Behrend majoring in Psychology with a minor in Management.

Overcrowding Prompts Building Project and \$2 Million Campaign

When SafeNet started 30 years ago, we never imagined how much our shelter services would be needed. On any given day, we provide sanctuary to as many as 28 women and children fleeing abuse. Our shelter, however, was originally built as a private residence for a family of five.

Did you know that inmates at the Erie County Prison have more individual living space than what we can offer abused women and children today?

Providing shelter is our frontline defense and most basic service. Until a woman and her children are safe, nothing else matters. **(Fifty percent of the victims of domestic violence at our shelter are children.)**

Unfortunately, last year we had to turn away over 120 battered women and children because we just didn't have

enough room to accommodate them.

Domestic violence shelters are the only local kind of shelters where the identity and location of victims are kept completely confidential to insure their personal safety.

In order to **serve victims better and keep from turning anyone away, we are renovating our shelter and building an adjacent annex.** This will increase the number of overnight accommodations available and give each person greater privacy and space to heal.

SafeNet will launch a \$2 million fundraising campaign after the first of the year. We have already we have raised about \$500,000, or a quarter of our goal from early donations. We hope you will help us too.

continued on page 2

Campaign Planning Committee ▼



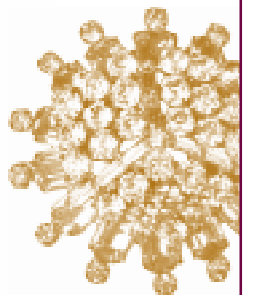
◀ *Honorary Chairperson Susan Hirt Hagen*



From left: Community Chairpersons Walter and Joan Harf, Board President Shirley Williams, Peggy Richardson, Treasurer Ed Whitbred, Ruth Burton, Jim Herr, Executive Director Linda King, Campaign Committee Chairperson Joe Conti.

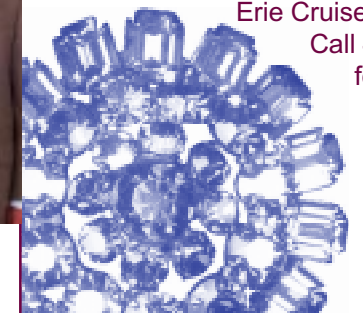
Boots n Buckles Jeans n Jewels

SafeNet Benefit
Gala with a Texas Flare



save the date

Friday, October 13
Erie Cruise Terminal
Call 455-1774
for tickets!





Medical Seminar

Examining Intimate Partner Violence

Erie's 10th annual medical conference on domestic violence will be held Thursday, October 26 at the Ambassador Conference Center from 8:30 a.m. to 3:00 p.m. The focus of this year's event is "Intimate Partner Violence: A Practical Approach."

Featured speakers will include **Zita Surprenant, MD**, Assistant Clinical Professor of the Department of Emergency Medicine at Kansas University Medical Center who will discuss key points for health care professionals when screening for domestic violence; and **Noel Ballentine, MD**, Associate Professor of Medicine at Penn State University who will outline legislative changes affecting victims of abuse, and discuss the debilitating effects of long-term abuse. **Joanne Witkowski**, a domestic violence survivor and advocate with Womansplace in Pittsburgh, will speak about her experience as a victim who accessed medical care.

For the first time, **Highmark Blue Cross Blue Shield** has pledged their corporate sponsorship for the event. **Jim Martin**, Community Affairs Director for Highmark will welcome participants on the morning of the conference. And Highmark will join with co-sponsors **Hamot Medical Center**, **Saint Vincent Health Center**, **Mercyhurst College Department of Social Work**, **Erie County Office of Drug and Alcohol**, **West-**



Event Sponsors

conference happening Oct. 14 during Natl. Domestic Violence Awareness Month.

ern Psychiatric Institute and Clinic, and **SafeNet** to provide a quality symposium offering continuing education credits in nursing, psychology, certified addiction counseling, teaching, and social work.

New this year, physicians can earn up to 5 AMA Category I and American Academy of Family Physicians continuing education credits by attending the conference.

Community Affairs Director **Jim Martin** from Highmark Blue Cross (left), Director of Outreach Programs **Cynthia Murphy** from SafeNet, CME Coordinator **Linda Carpenter** from Hamot Medical Center (seated) and CME Coordinator **Ovidia Purchase** from St. Vincent's Health Center get together to plan this year's medical

The conference has a \$40 registration fee, which includes breakfast, lunch, and all conference materials.

For more information contact **Cynthia Murphy at SafeNet at 455-1774 or e-mail her at cmurphy@safeneterie.org**.

SafeNet

Board of Directors

Shirley Williams

President

Jeanne Peck

Vice President

Edward Whitbred

Treasurer

Kathleen Pae

Secretary

Joseph Conti, Esq.

Renee Filson

James Herr

John Johnston

Lynn McBrier, Esq.

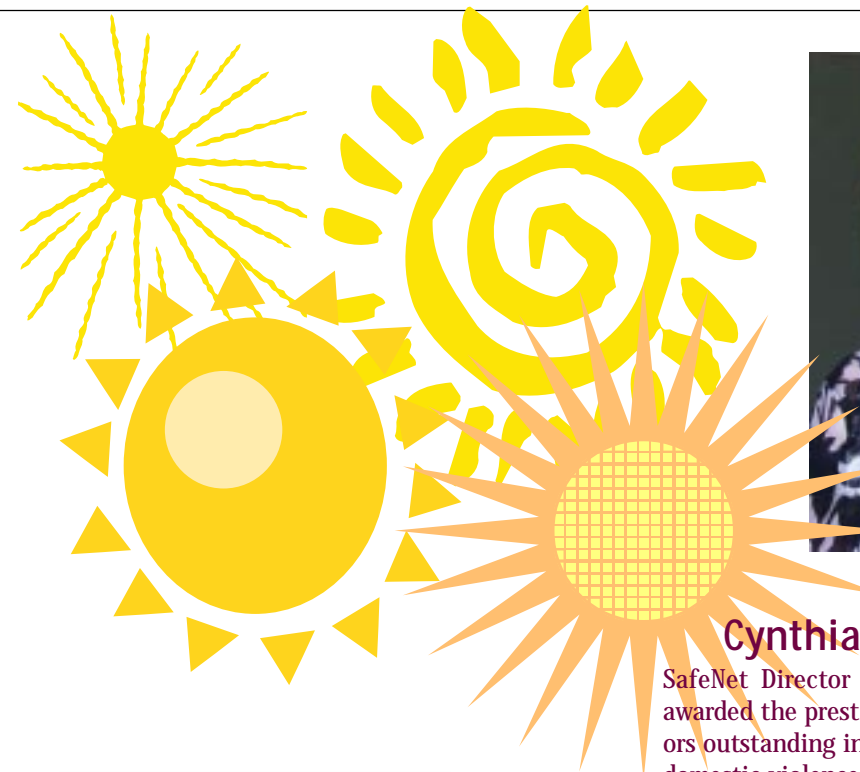
Gina Rullo

Nancy Sennett

kathleen Whipple

Linda King

Executive Director



Doris Buffett and Cynthia Murphy

Cynthia Murphy Wins Sunshine Award

SafeNet Director of Outreach Programs **Cynthia Murphy** recently was awarded the prestigious Sunshine Peace Award. This national award honors outstanding individuals working on the frontlines in the fight to end domestic violence.

The award is bestowed every two years by the Sunshine Lady Foundation begun by Doris Buffett, sister of billionaire Warren Buffett. The award recognizes the courage, strength, and successes of those who bring hope, healing and safety to survivors of abuse.

Cynthia was chosen to receive this honor for her unique contributions and commitment to domestic violence victims in Erie County. Her award is only the third time a recipient from Pennsylvania has been selected. Doris Buffett presented Murphy with a personal monetary award at a ceremony in Wilmington, DE, and gave SafeNet an additional \$5,000 for victim assistance.

Over a 10 year period, Buffett has given over \$1 million in personal funds to individuals whose efforts have made a difference in the fight to end domestic violence. *Congratulations Cynthia!*

continued from page 1

What Improvements Will Be Made?

Phase 1 of our plan to renovate and expand our emergency shelter will **focus on the construction of a building adjacent to our current shelter**. The new building will have five bedrooms, a family room, and a large multipurpose room, which will be used for study, support groups and classes. The additional space will alleviate overcrowding in our current shelter and give families more quiet time and privacy throughout their stay with us.

Phase 2 of our plan will be to **renovate our existing shelter**. The interior redo will include expanding the kitchen and updating the appliances as well as remodeling the bathrooms, replacing windows, and freshening up the paint and furnishings throughout the house. A comprehensive security system also will be installed.

Phase 3 will create a **beautiful outdoor green space**, which will include play areas and a tranquil garden where women and their children can think, relax, play and safely spend time together in the sun and fresh air.

For more information about our renovation and building plans, or if you would like to donate to our capital campaign before the end of the year, please contact Rick Liebel at 814-455-1774.

New Director Public Relations and Development



Rick Liebel

Rick Liebel has joined SafeNet as its new director of development and public relations. Rick will handle media relations, marketing, event planning and fundraising for our agency. He will also help coordinate our \$2 million capital campaign.

Previously, Rick worked at PNC Bank and most recently as a press secretary with the Pennsylvania Historical and Museum Commission and public relations and marketing director for the US Brig Niagara and Erie Maritime Museum. To contact Rick call 455-1774 or e-mail him at rliebel@safeneterie.org.

Join the generous joggers, runners, and walkers who will be gathering at Presque Isle this October for a 5K race benefitting SafeNet.

Erie Times Publishing's *Her Times* magazine and the Erie Runners Club are cosponsoring the event. Winners will receive awards and everyone who finishes the race will get a special ribbon.

The entry fee is just \$15, which entitles you to a *Her Times* tee shirt plus some great coupons and sample products.

Free baby-sitting will be offered on site. After-race massages also will be available free from Toni & Guy Academy students.

Preregister on-line at hertimes.com or get your sign-up sheet from SafeNet by calling 455-1774. The benefit race will take place Saturday, October 14, Presque Isle State Park, Beach 1, starting at 10 a.m.

